



LINHOPE STREET, LONDON, NW1

ASKING PRICE
£1,695,000
FREEHOLD
SOLE AGENTS

We are absolutely delighted to bring to the market this rarely available period house set within a tranquil street in the much sought-after Dorset Square conservation area, only a short walk to the open spaces of Regent's Park and Baker Street underground station.

The property comprises three/four bedrooms, a family bathroom and separate shower room, two reception rooms, fitted kitchen with a light and airy dining area. The house also benefits from a lovely outdoor terrace.

Linhope Street is located to the west of Regent's Park and to the north of Dorset Square in a quiet enclave with charm and character.

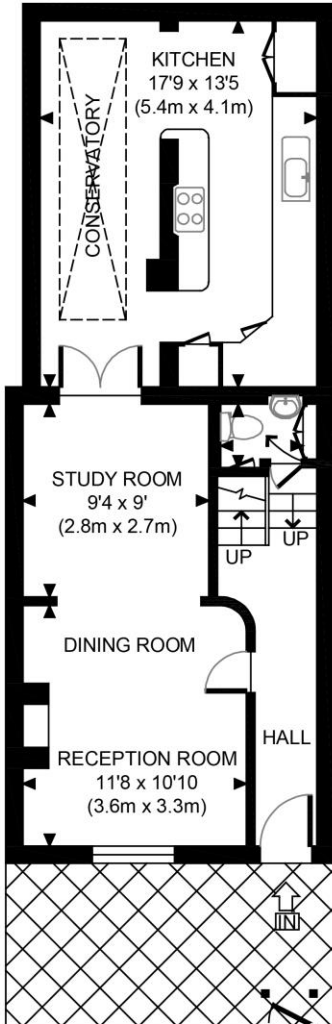


213 – 215 Gloucester Place, Regent's Park, London NW1 6BU.
T: +44 (0)20 7723 9988 • F: +44 (0)20 7723 9958 • DX: 83405 St John's Wood • www.sandfords.com

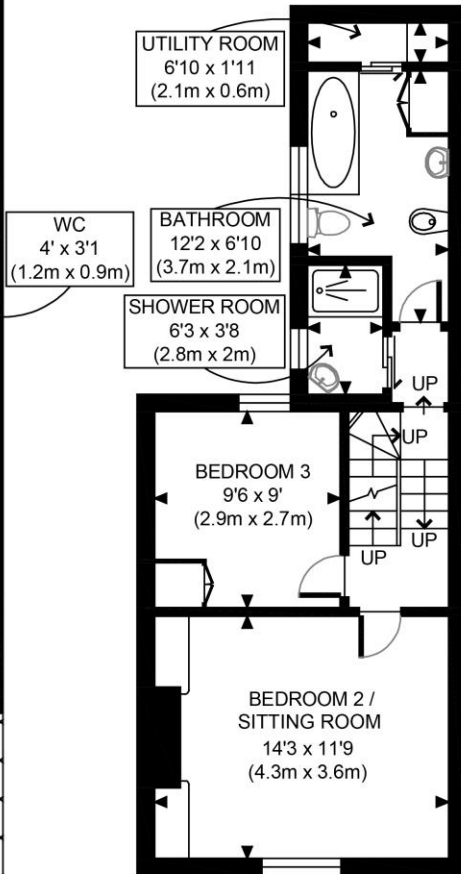


Misrepresentation Act 1967. This brochure and the descriptions and measurements herein do not constitute representation and whist every effort has been made to ensure accuracy, this cannot be guaranteed.

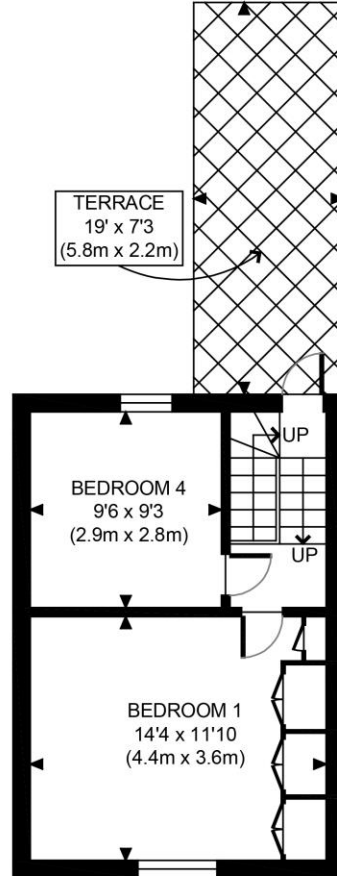
Sandfords London Limited, registered in England 2961709



GROUND FLOOR
GROSS INTERNAL
FLOOR AREA 555 SQ FT

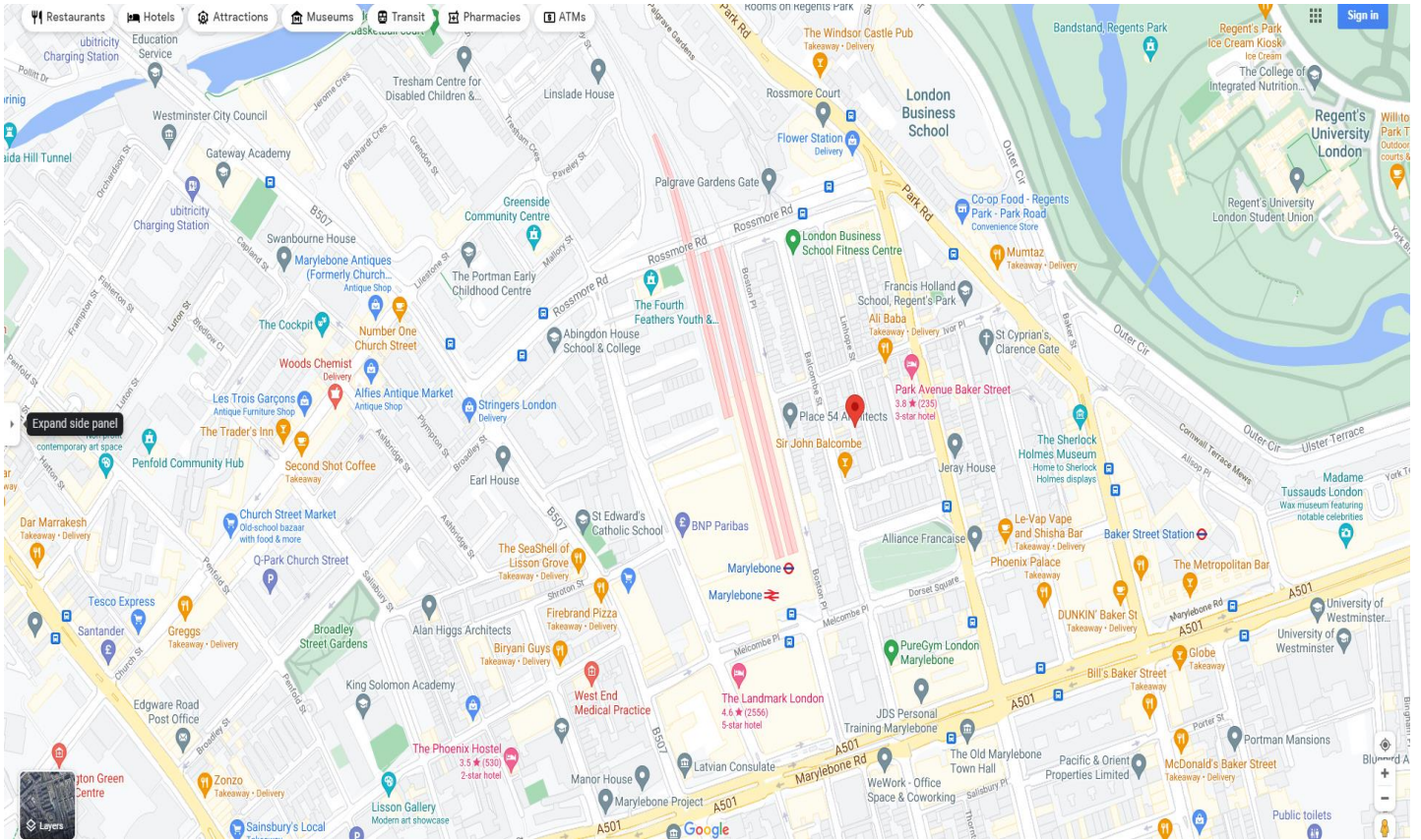


FIRST FLOOR
GROSS INTERNAL
FLOOR AREA 437 SQ FT



SECOND FLOOR
GROSS INTERNAL
FLOOR AREA 312 SQ FT

APPROX. GROSS INTERNAL FLOOR AREA 1304 SQ FT / 121 SQM	
Disclaimer: Floor plan measurements are approximate and are for illustrative purposes only. While we do not doubt the floor plan accuracy and completeness, you or your advisors should conduct a careful, independent investigation of the property in respect of monetary valuation	
Linhope St NW1	
date	11/08/21
photoplan	



Accommodation

The property comprises three/four bedrooms, a family bathroom and separate shower room, two reception rooms, fitted kitchen with a light and airy dining area. The house also benefits from a lovely outdoor terrace.

Benefits

- Close to both Baker Street and Marylebone Station
- Within walking distance to the open spaces of Regent's Park

Tenure

Freehold

Price

£1,695,000 subject to contract

213 – 215 Gloucester Place, Regent's Park, London NW1 6BU.

T: +44 (0)20 7723 9988 ▪ F: +44 (0)20 7723 9958 ▪ DX: 83405 St John's Wood ▪ www.sandfords.com



Misrepresentation Act 1967. This brochure and the descriptions and measurements herein do not constitute representation and whilst every effort has been made to ensure accuracy, this cannot be guaranteed.

Sandfords London Limited, registered in England 2961709