



IVOR COURT, GLOUCESTER PLACE, NW1

ASKING PRICE £549,950
LEASEHOLD
SOLE AGENTS

A well-presented, one bedroom apartment with a huge reception room on the second floor of a purpose-built block in Marylebone.

The accommodation comprises a 33ft long combined reception and dining room, a spacious bedroom with built in wardrobes and dressing table, a bright well-equipped kitchen and a bathroom.

Ivor Court is located on Gloucester Place, just moments from the open spaces of Regent's Park and within easy walking distance of Baker Street Underground station (Jubilee, Metropolitan, Circle, Bakerloo, Hammersmith & City lines).

Council Tax Band D Westminster City



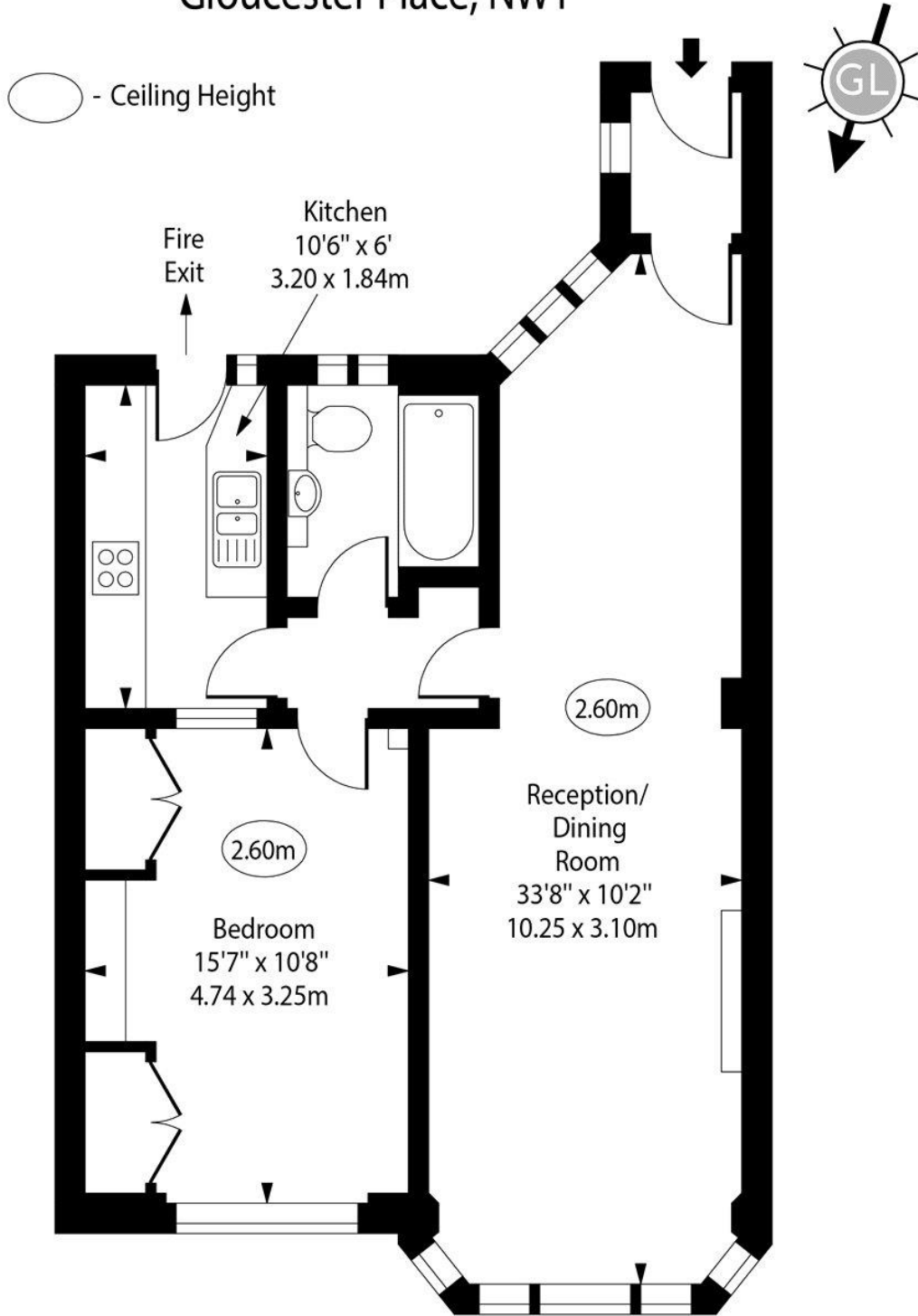
213 – 215 Gloucester Place, Regent's Park, London NW1 6BU.
T: +44 (0)20 7723 9988 ▪ F: +44 (0)20 7723 9958 ▪ DX: 83405 St John's Wood ▪ www.sandfords.com



Misrepresentation Act 1967. This brochure and the descriptions and measurements herein do not constitute representation and whilst every effort has been made to ensure accuracy, this cannot be guaranteed.

Sandfords London Limited, registered in England 2961709

Ivor Court, Gloucester Place, NW1



Second Floor

Approx Gross Internal Area 635 Sq Ft - 59.00 Sq M

For Illustration Purposes Only - Not To Scale

www.goldlens.co.uk

Ref. No. 018270R



Accommodation

A reception and dining room, a spacious bedroom with built in wardrobes and dressing table, a bright well-equipped kitchen and a bathroom.

Benefits

- 24 hour concierge service
- Period features
- Within close proximity to the open spaces of Regent's Park as well as Baker Street and Marylebone stations

Tenure

Leasehold; with approximately 104 years remaining

Price

£549,950 subject to contract